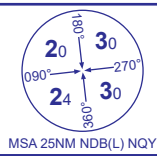


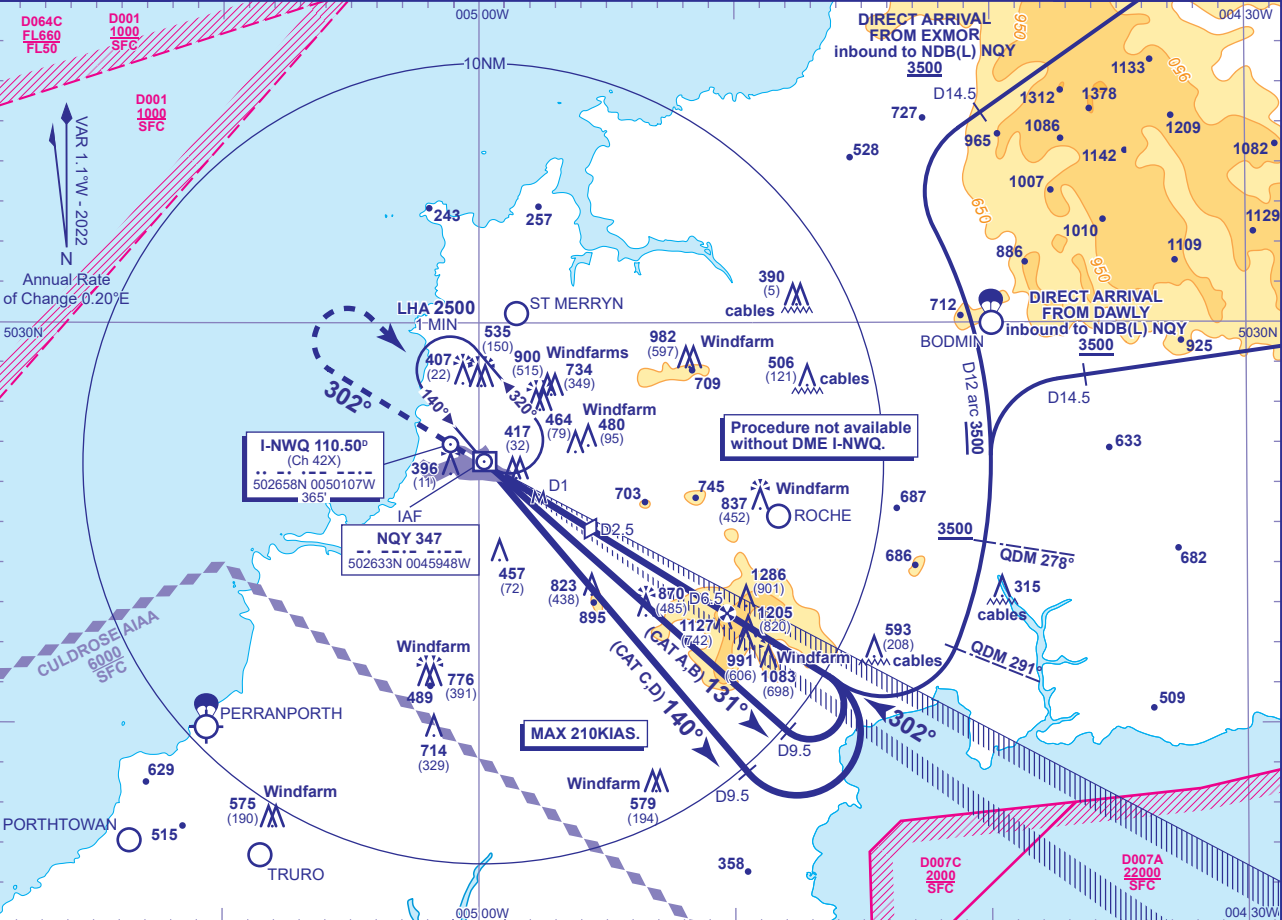
APPROACH CHART - ICAO

NEWQUAY LOC/DME/NDB(L) RWY 30 (ACFT CAT A,B,C,D)



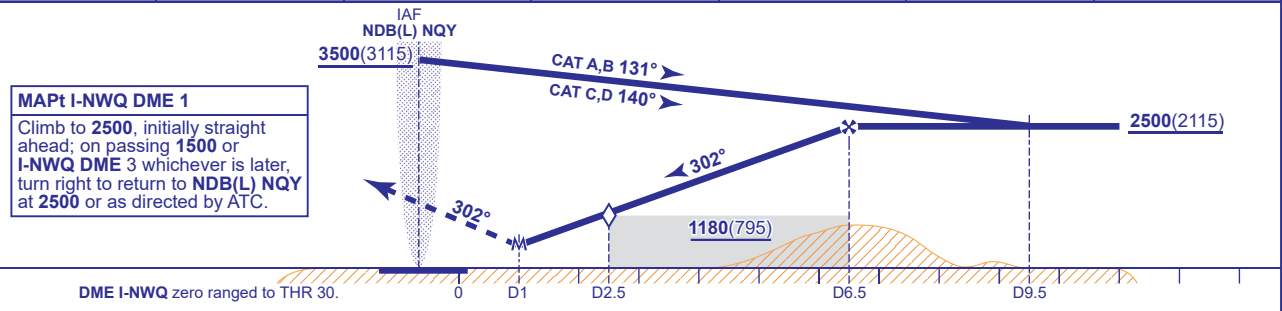
MSA 25NM NDB(L) NQY

APP	133.405	NEWQUAY APPROACH	AD ELEVATION	390
TWR	134.380	NEWQUAY TOWER	THR ELEVATION	385
RAD	127.930	NEWQUAY RADAR	OBSTACLE ELEVATION	1286 AMSL (901) (ABOVE THR)
ATIS	127.405	NEWQUAY INFORMATION	BEARINGS ARE MAGNETIC	
				TRANSITION ALTITUDE 3000



RECOMMENDED PROFILE Gradient 5.24%, 318FT/NM

DME I-NWQ	6	5	4	3	2.5 (SDF)	2
ALT(HGT)	2350(1965)	2030(1645)	1710(1325)	1390(1005)	1230(845)	1070(685)



**MAPt I-NWQ DME 1**  
Climb to **2500**, initially straight ahead; on passing **1500** or **I-NWQ DME 3** whichever is later, turn right to return to **NDB(L) NQY** at **2500** or as directed by ATC.

Aircraft Category		A	B	C	D	Rate of descent	G/S KT	160	140	120	100	80
OCA (OCH)	Procedure	750(365)	750(365)	750(365)	750(365)		FT/MIN	850	740	640	530	420
VM(C)OCA (OCH AAL)	Total Area	790(400)	1200(810)	1330(940)	1330(940)							

**NOTE** ATC will normally require aircraft to hold no lower than **3500**.

**CHANGE (4/24):** OCA(OCH) CAT I AMENDED TO PROCEDURE.